

# MONTHLY MEMBERSHIP PROGRESS REPORT

LOCATION INDIA

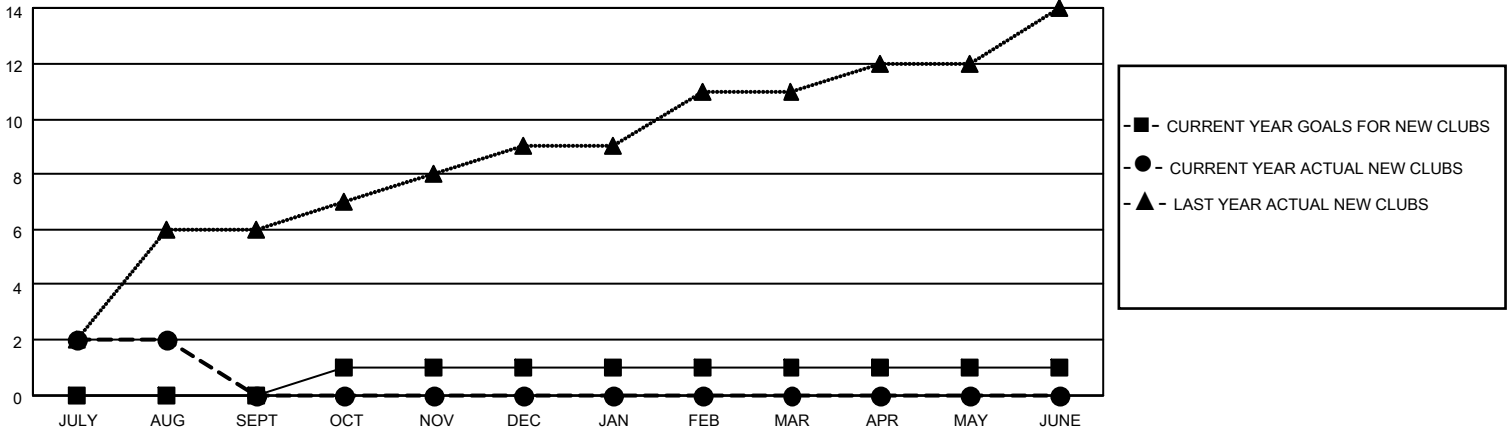
District 3232F2

Results as of: 8/31/2023

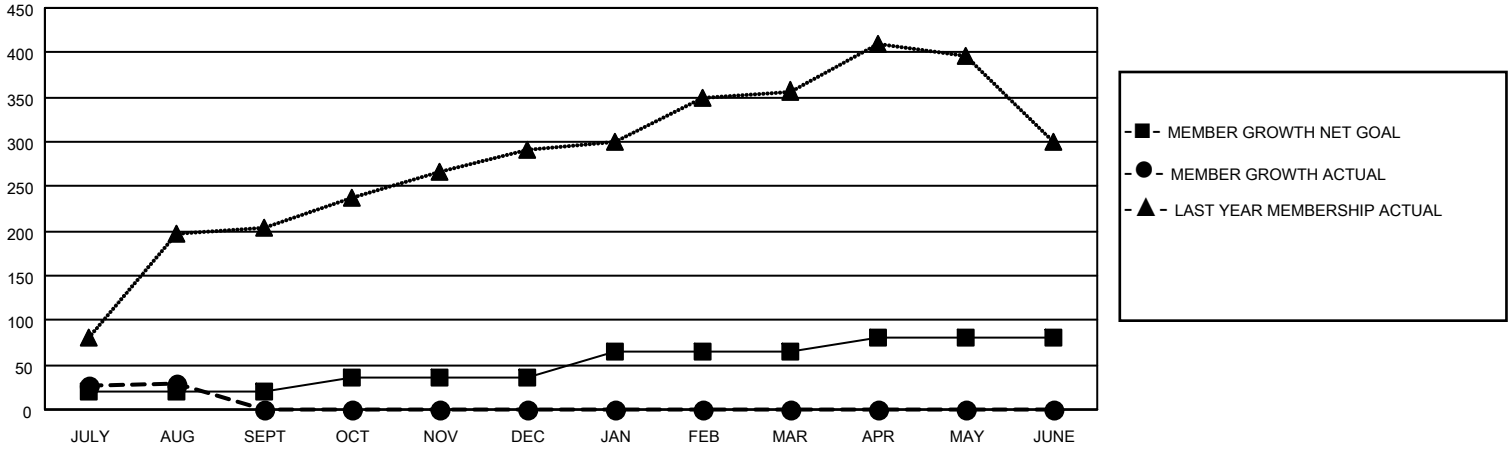
Clubs			
RESULTS FOR 2023-2024			
QUARTER	NEW CLUB GOAL	NEW CLUBS	DROPPED CLUBS
JULY/AUG/SEPT	0	2	0
OCT/NOV/DEC	1	0	0
JAN/FEB/MAR	0	0	0
APR/MAY/JUNE	0	0	0

Members			
RESULTS FOR 2023-2024			
QUARTER	MEMBER GROWTH NET GOAL	MEMBER GROWTH ACTUAL	DROPPED MEMBERS ACTUAL (including transfers)
JULY/AUG/SEPT	20	94	62
OCT/NOV/DEC	15	0	0
JAN/FEB/MAR	30	0	0
APR/MAY/JUNE	15	0	0

**GOALS AND ACTUAL NEW CLUBS CUMULATIVE**



**GOALS AND ACTUAL MEMBERS CUMULATIVE**



**DROPPED CLUBS: 0**

**20 CLUBS OF 91 ADDED 1 OR MORE NEW MEMBERS**

**GENDER DISTRIBUTION**

**DROPPED MEMBERS**

DECEASED	1
CLUB CANCELLED	0
OTHER	61
<b>TOTAL</b>	<b>62</b>

[CLICK HERE FOR CUMULATIVE MEMBERSHIP DATA](#)

MALE	1,909 (61.62%)
FEMALE	1,185 (38.25%)
NON BINARY	0 (0.00%)
PREFER NOT TO ANSWER	4 (0.13%)

TOTAL FAMILY UNIT MEMBERS 2,127

FAMILY MEMBERS PAYING HALF DUES 1,326